

DRSK 

DRSK JAW™



Premium products
at
non-premium prices

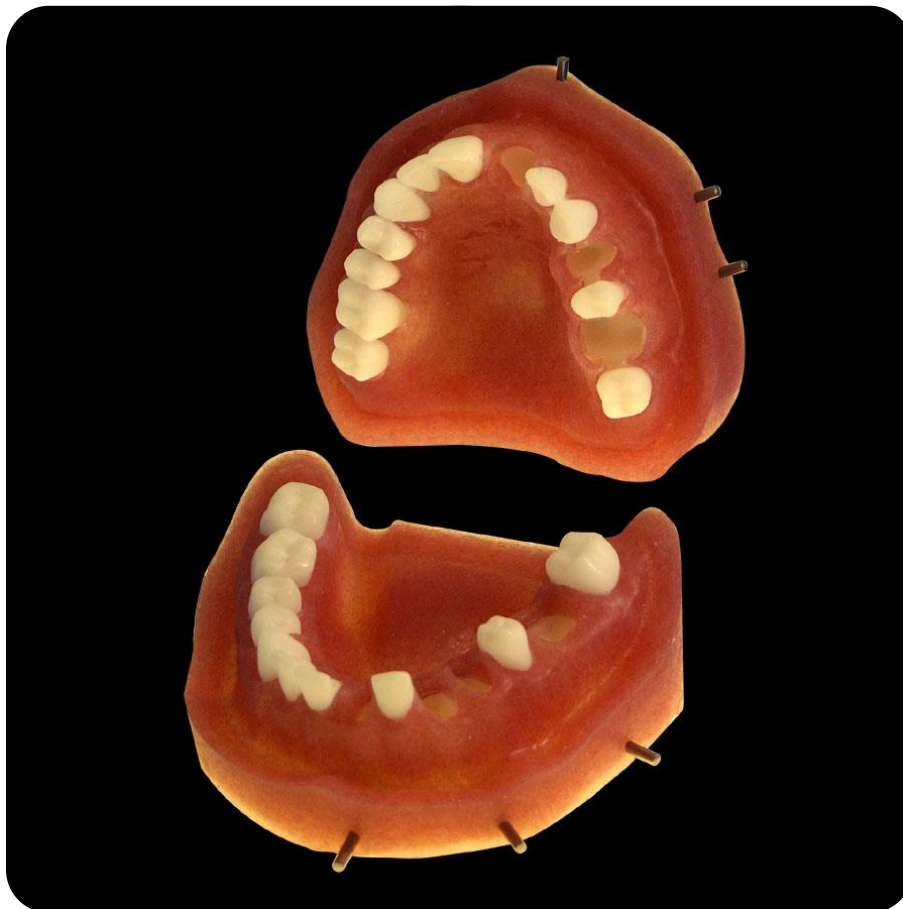
Summary

DRSK Jaw™ is a jaw model which can be used as a holder for dental models and keeps them stable and immobile during the practice. This jaw model contains built-in slots which receive DRSK tooth models wrapped in sleeves.

A full set of DRSK Jaw is comprised of upper and lower jaws. The jaws emulate the anatomical topography of their real counterparts. Each jaw consists of simulated bone and gum, artificial teeth and slots for placing DRSK tooth model.

DRSK tooth models are inserted into sleeves, which hold them fixed inside the corresponding slot in the jaw model. After each use, the tooth model can be removed together with its sleeve, taken out of the sleeve and then replaced by a new tooth model for a new practice. Some DRSK tooth models, categorized as 'sleeved tooth' are produced as one piece with their sleeve.

DRSK Jaw is manufactured in Sweden.



Features

DRSK Jaw is an excellent model for optimal simulations of dental treatments, because it:

- Keeps the tooth models stable and immobile within a dental arch during practice.
- Enables the practitioner to work on the teeth placed in positions similar to those of natural teeth in the oral cavity.
- Allows replacement of tooth models.
- Allows placement of the rubber dam, without this procedure pushing out the tooth model.
- Accommodates various DRSK tooth models:
 - DRSK RCT
 - DRSK Periapical
 - DRSK Extraction
 - DRSK Restorative

therefore it can be used for practicing different dental procedures.

The DRSK tooth models which can be placed in the upper and lower jaws:

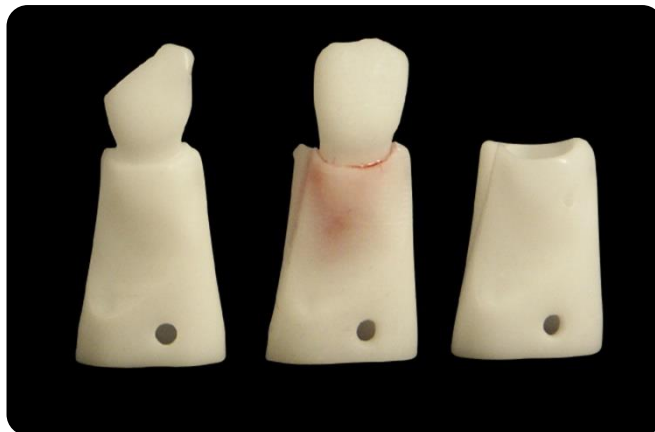
- Central incisor
- First premolar
- First molar

The DRSK tooth model which can be placed only in the lower jaw:

- Canine

Phantom head compatibility

DRSK Jaw is compatible with commonly-used phantom heads. It can as well be customized and made compatible with any other phantom head. To do so, the information regarding the phantom head needs to be communicated when ordering the jaw model.



Components

Each DRSK Jaw is made up of three components:

- Body of the jaw with fixed artificial teeth and slots
- Removable tooth blocks
- Artificial gum

The following component can be inserted into the jaw:

- Sleeves
- Pins
- Sleeved teeth

All components mentioned above are replaceable. A standard package of DRSK Jaw includes all these components, with the exception of sleeved teeth which are separate products.



Warning: Both fixed artificial teeth and removable tooth blocks in DRSK Jaw are only for establishing a dental arch; they are not meant for practicing any kind of dental treatment. Dental procedures have to be practiced only on DRSK tooth models, which are fitted into the slots of the jaw model.

Note: To make replacing the artificial gum easier, all the sleeves and removable tooth blocks are recommended to be detached from the jaw first. For instructions on how to replace the gum, refer to the section 'Replacing the artificial gum' in this catalogue.

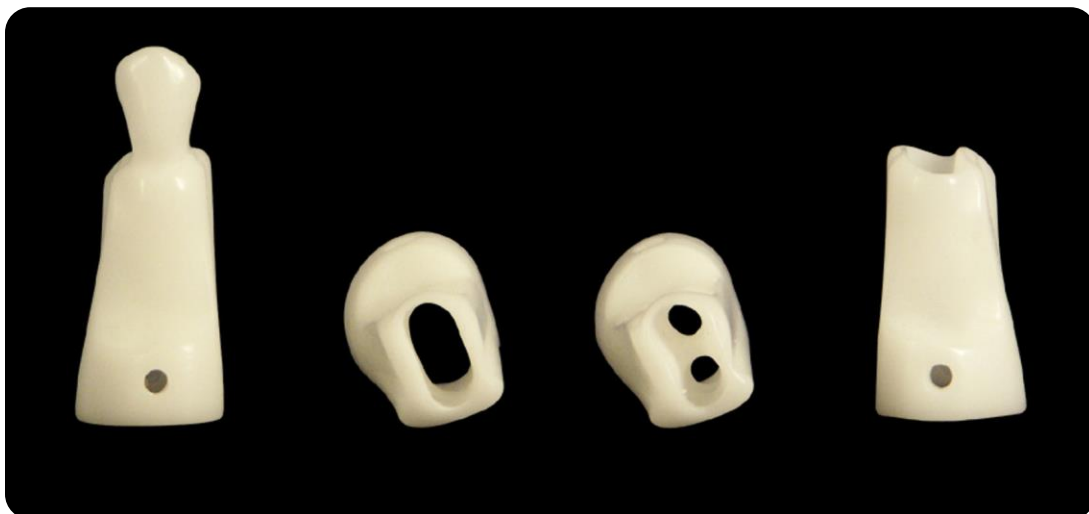
Sleeve

Sleeves are reusable components used for attaching DRSK tooth models to DRSK Jaw. Each sleeve matches its corresponding DRSK tooth. All sleeves have a single space and receive only one tooth model. The only exception is the sleeve for the mandibular canine and the mandibular first premolar, which has two spaces and receives both tooth models.

Sleeves have a small hole on their buccal side near their base. This hole is meant for insertion of pins (see 'Pin' section) and referred to as the 'pin hole'.

Sleeves are produced in three forms:

- **Fit Sleeves:** These sleeves feature hollow spaces almost similar to dental sockets. These spaces follow the external anatomy of roots of DRSK teeth and provide a better stability for the tooth models. They can be used with DRSK tooth models only.
- **Loose Sleeves:** The inner spaces of these sleeves are not anatomically formed. In addition to DRSK teeth, they can host other tooth models of different brands, as well as extracted teeth.
- **Closed Sleeves:** These sleeves are closed at the bottom. Practicing apex locator on DRSK RCT requires using a closed sleeve, which can sit inside DRSK Jaw or the corresponding DRSK Jaw Segment (see 'DRSK Jaw Segment' section). This sleeve has a closed space under the apex of the tooth model, which can be filled by a commercially standard conductive liquid material such as gel. The conductive gel is injected into the closed space through either a hole on the buccal side of the sleeve or the hole(s) at the bottom end of the socket-shaped space inside the sleeve.



Sleeved tooth

Certain DRSK tooth models are produced together with their sleeves in one piece. Those models are referred to as 'sleeved tooth'. The sleeved tooth is installed inside the jaw model in the same way as a sleeve. DRSK Periapical, DRSK Extraction and some DRSK Restorative models are examples of sleeved teeth.

Pin

The pin is used to fasten sleeves, sleeved teeth, or removable tooth blocks to DRSK Jaw.

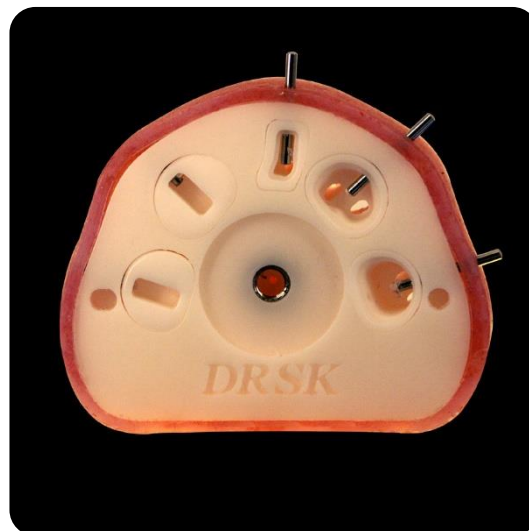
Pins are available in two types:

- Standard: Radiolucent, made of plastic.
- Optional: Radiopaque and electrically conductive, made of metal.

Warning: The standard pins are fragile; using excessive force for their insertion and removal should be avoided.

To use an apex locator on a tooth model, an 'optional' pin must be inserted in the pin hole of the corresponding closed sleeve. Once inserted, a small part of the pin sticks out. The device should then be linked to this extruding part of the pin. After each session, the pin has to be cleaned and completely dried before being used again.

Note: The pins shown in the images in this catalogue are optional (metal) pins. However DRSK Jaws normally come with standard (plastic) pins. If you need optional pins, you should specify that when ordering.



DRSK Jaw Segment

DRSK Jaw Segment is an alternative holder for DRSK tooth models. It consists of two teeth on each side of a slot which can host a sleeve carrying the tooth model or a sleeved tooth. As with DRSK Jaw, a pin fastens the sleeve to the jaw segment. To place DRSK tooth into the jaw segment and remove it, the same instructions provided in the section 'instructions for use' for DRSK Jaw apply. DRSK Jaw Segment can be ordered in transparent or white material and is available as various sections of the dental arch.



Ordering

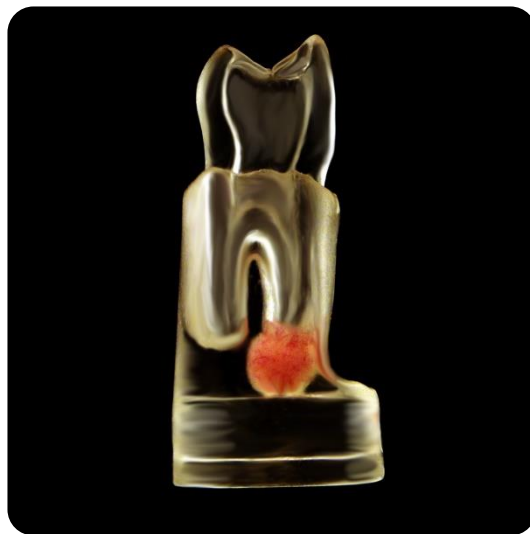
- Upper or lower DRSK Jaws can be ordered individually or together as a set.
- For a set of upper and lower jaw the minimum order quantity is one 'DRSK Jaw (complete set)'.
- To order upper or lower DRSK Jaws individually, the minimum order quantity is 2 models.
- All listed accessories and spare parts of the jaw can be ordered individually.
- To place an order, send an email to sales@drsk.com.
- To view the detailed list of DRSK products, please check the following links:
 - DRSK RCT: <https://www.drsk.com/rct.pdf>
 - DRSK Restorative: <https://www.drsk.com/res.pdf>
 - DRSK Extraction: <https://www.drsk.com/ext.pdf>
 - DRSK Jaw: <https://www.drsk.com/jaw.pdf>

DRSK Periapical

DRSK Periapical™ model is a tooth model (sleeved tooth) for practicing periapical surgery and retrograde filling. The model is in the shape of a tooth unified with the surrounding bone. This accessed tooth model comes with root canals and a periapical lesion. The apical part of the root is surrounded with a soft material that simulates a periapical lesion.

This model allows performing apical resection and retrograde filling just as on a real patient. The simulated periapical lesion has a lifelike consistency and the same holds true for the 'hard tissue' parts of the model. DRSK Periapical is an excellent training model for performing periapical surgery in graduate and post-graduate hands-on trainings.

For a complete simulation of periapical surgery, DRSK Periapical has to be installed in DRSK Jaw. Feeling almost similar to the natural soft tissue, the simulated gum of DRSK Jaw makes it possible to practice giving incision and suturing as the first and last step of the endodontic surgery.



Instructions for use

(For the sleeved tooth refer to the section 'Instructions for using sleeved tooth models' in this catalogue)

To place DRSK tooth models inside DRSK Jaw

- Select the DRSK tooth model (If it is a sleeved tooth, refer to 'Instructions for using sleeved tooth models' section).
- Select the corresponding sleeve.
- Try the tooth inside the sleeve to make sure they match.
- Prepare the adhesive material of your choice and apply it to the inside surface of the sleeve, or the root of DRSK tooth model, or both. Make sure that the apex of the tooth model is not coated with glue.
- Insert the DRSK tooth model into the top opening of the sleeve in correct orientation. Press down on the crown until the tooth sits in its final position.
- Wait for adhesive to completely set. Gently remove the excess of glue. Make sure the tooth and the sleeve are firmly attached together as one piece.
- Push the sleeve through the corresponding opening at the base of the jaw until it sits snugly in place.
- Drive the pin through the pin hole in order to secure the sleeve inside the jaw (for instructions on how to place the pin correctly refer to the section 'Replacing the pin').

To remove DRSK tooth models from DRSK Jaw

- Pull the pin out. This releases the sleeve from the jaw model (for instructions on how to remove the pin correctly refer to the section 'Replacing the pin').
- Press down on the crown of the tooth. The tooth and the sleeve will come out as one piece.
- To detach the tooth from the sleeve, follow the tips in the section below.

Note: After placing tooth models in the corresponding sleeve and inserting the sleeves in the jaw, the gum between the teeth might be sticking out. In this case use a blunt tool and lightly press the gum between the teeth into its right place in the interdental area.

Tips on how to attach and replace the tooth models

- To attach DRSK tooth to the sleeve, it is recommended to use the glue suggested by DRSK.
- To detach the tooth from the sleeve:
 - Place the sleeve and tooth model in hot water with a temperature of up to 55°C for approximately 2 to 3 minutes,
 - The tooth model then can be removed from the sleeve by hand carefully.

Warning:

- Make sure that the applied temperature does not exceed 55°C. Also, models must not be heated longer than 3 minutes.
- Do not twist the teeth when removing it from the sleeves; this can break the roots. Simply pull them out straight.

Instructions for using sleeved tooth models

Sleeved tooth models include DRSK Periapical, DRSK Extraction and some DRSK Restorative models. These models come as already fused to their sleeves.

To place the sleeved tooth into DRSK Jaw

- Select the sleeved tooth.
- Push it through the corresponding opening at the base of the jaw until it sits snugly in place.
- Drive the pin through the pin hole in order to secure the sleeved tooth inside the jaw (for instructions on how to place the pin correctly refer to the section 'Replacing the pin').
- Now the sleeved tooth must be secure inside DRSK Jaw.

To remove the sleeved tooth from DRSK Jaw

- Detach the jaw model from the phantom head.
- Pull the pin out. This releases the sleeve from the jaw model (for instructions on how to remove the pin correctly refer to the section 'Replacing the pin').
- Press down on the crown of the tooth. The sleeved tooth will come out.

Instructions for replacing the removable components

Replacing tooth blocks

To remove the tooth block from DRSK Jaw

- Detach the jaw model from the phantom head.
- Pull the pin out. This releases the tooth block from the jaw model (for removing the pin correctly refer to the section 'Replacing the pin').
- Press down on the crown of the tooth. The tooth block will come out.

To install a new tooth block into DRSK Jaw

- Select the replacing tooth block.
- Push the tooth block through the corresponding opening at the base of the jaw until it sits snugly in place.

- Drive in the pin in order to secure the tooth block inside the jaw (for placing the pin correctly refer to the section 'Replacing the pin').
- Now the tooth block must be secure inside DRSK Jaw.

Replacing the artificial gum

To detach the gum

- Remove all the replaceable DRSK tooth models and tooth blocks from the jaw according to the earlier instructions.
- Take one edge of the gum and gently pull it away from the jaw until it is fully removed.

To install the gum

- Remove all the replaceable DRSK tooth models and tooth blocks from the jaw according to the earlier instructions.
- Pull the gum gently over the jaw. Make sure that it completely fits.
- Install replaceable DRSK tooth models and tooth blocks back into the jaw according to the earlier instructions.

Note: During installation and removal of the gum, the user might need to stretch its interproximal parts and push it into the interproximal space. This is to prevent the gum from being torn.

Replacing the pin

To insert the pin

- Drive in the pin through the small pin hole on the buccal side of the jaw, next to where the sleeve is placed. The pin has to be pushed in, until its end is flush with the jaw surface.
- For sleeve 31, the pin has to go all the way in until a small portion of it sticks out.
- For placing the pin and pushing it inside, using a cotton plier is recommended.

To remove the pin

- Turn the jaw over and look at its bottom. Through the apical opening of the sleeve, one end of the pin can be seen.
- Grab this visible end of the pin by a cotton plier and push it outwards, until the other end of the pin sticks out of the jaw.
- Grab the end that is sticking out of the jaw and pull the pin out of the jaw model.
- To remove an optional pin from a closed sleeve, simply grab the extruding part by a cotton plier and pull it out.

Warning: The standard pins are fragile; applying an acceptable amount of pressure is recommended for their insertion and removal. In case of a broken pin fragment inside the pin hole, use a condenser/plugger (Ø1.5mm) to press it from inside towards the outside of the sleeve/jaw.

Safety precautions

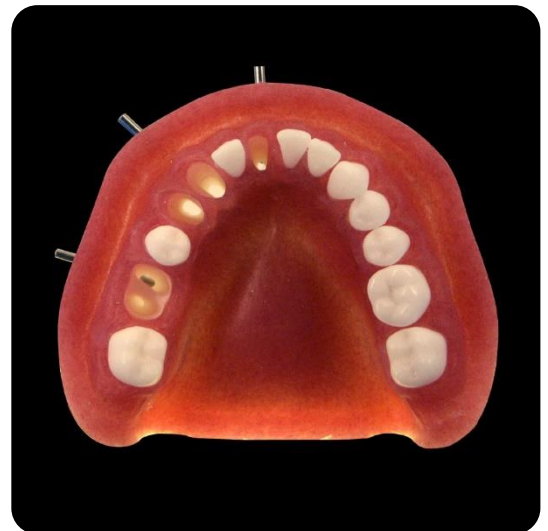
When working on DRSK models, always observe these points:

- Throughout the practice you **MUST**:
 - Wear eye protection.
 - Put on a mask.
 - Have gloves on.



- Practicing on DRSK models has to be done in places where safety standards are maintained.
- People with a history of allergy (particularly, allergy to resins) need to consult with their physicians and follow their suggested precautions.
- Keep the models out of reach of children and pets.
- Models are recommended to be used only for the purposes indicated in DRSK catalogues.
- Tools and equipment have to be used on DRSK models with the same precautions required when working in a clinical set-up.
- Always use clean and non-infected tools on DRSK models.
- DRSK models and their accessories have to be disposed of in a proper way in accordance with local rules and regulations.

The material used in DRSK models is proved as non-cancerogenic.



Jaw model

DRSK Maxilla



Maxillary jaw includes:
 5 slots for sleeves
 9 fixed teeth
 2 removable tooth blocks
 3 Sleeves
 1 removable artificial gum
 5 pins

Article Code

Color

MAX-ST1-W

Gum: Light red, Bone: White

DRSK Mandible



Mandibular jaw includes:
 5 slots for sleeves
 7 fixed teeth
 2 removable tooth blocks
 3 Sleeves
 1 removable artificial gum
 5 pins

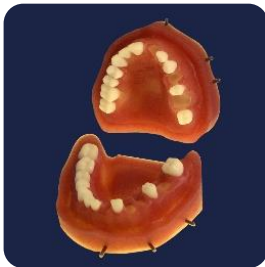
Article Code

Color

MAN-ST1-W

Gum: Light red, Bone: White

DRSK Jaw complete set



DRSK Maxilla
 DRSK Mandible

Article Code

Color

J-ST1-W

Gum: Light red, Bone: White

Jaw model

Maxillary fit sleeves



Sleeve with a dental socket-shaped space

Article Code	Compatible tooth	Jaw Slot
SLV-21-1A1	DRSK maxillary central incisor	21
SLV-24-101	DRSK maxillary first premolar	24
SLV-26-101	DRSK maxillary first molar	26

Function: Placing DRSK RCT and DRSK Restorative inside DRSK Jaw

Mandibular fit sleeves



Sleeve with a dental socket-shaped space

Article Code	Compatible tooth	Jaw Slot
SLV-31-101	DRSK mandibular central incisor	31
SLV-33,4-101	DRSK mand. canine, premolar	33,4
SLV-36-101	DRSK mandibular first molar	36

Function: Placing DRSK RCT and DRSK Restorative inside DRSK Jaw

Maxillary tooth blocks



Tooth wrapped in a sleeve

Article Code	Wrapped tooth	Jaw Slot
SLV-14-T	DRSK maxillary first premolar	14
SLV-16-T	DRSK maxillary first molar	16

Suggested for: Maintaining dental arch

Mandibular tooth blocks



Tooth wrapped in a sleeve

Article Code	Wrapped tooth	Jaw Slot
SLV-43,4-T	DRSK mand. canine, premolar	43,4
SLV-46-T	DRSK mandibular first molar	46

Suggested for: Maintaining dental arch

Jaw model

Maxillary loose sleeves



Sleeve with an unformed hollow space

Article Code	Compatible tooth	Jaw Slot
SLV-21-L	DRSK maxillary central incisor	21
SLV-24-L	DRSK maxillary first premolar	24
SLV-26-L	DRSK maxillary first molar	26

Suggested for: Placing extracted teeth and other brands of tooth models inside DRSK Jaw

Mandibular loose sleeves



Sleeve with an unformed hollow space

Article Code	Compatible tooth	Jaw Slot
SLV-31-L	DRSK mandibular central incisor	31
SLV-33,4-L	DRSK mand. canine, premolar	33,4
SLV-36-L	DRSK mandibular first molar	36

Suggested for: Placing extracted teeth and other brands of tooth models inside DRSK Jaw

Maxillary stopper sleeves

image
unavailable

Sleeve with a dental socket-shaped space and closed base

Article Code	Compatible tooth	Jaw Slot
SLV-21-S	DRSK maxillary central incisor	21
SLV-24-S	DRSK maxillary first premolar	24
SLV-26-S	DRSK maxillary first molar	26

Suggested for: Locating apex by apex locator on DRSK RCT tooth models

Mandibular stopper sleeves

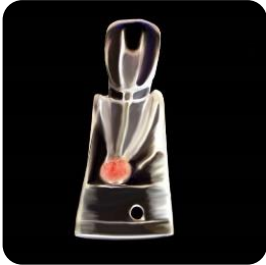
image
unavailable


Sleeve with a dental socket-shaped space and closed base


Article Code	Compatible tooth	Jaw Slot
SLV-31-S	DRSK mandibular central incisor	31
SLV-33,4-S	DRSK mand. canine, premolar	33,4
SLV-36-S	DRSK mandibular first molar	36

Suggested for: Locating apex by apex locator on DRSK RCT tooth models

Jaw model

DRSK Periapical (maxilla)		Article Code	Color	Jaw Slot
 <p>Tooth block featuring periapical lesion</p>		SLV-21-01-CAL	Transparent	21
		SLV-24-01-CAL	Transparent	24
		SLV-26-01-CAL	Transparent	26
	Suggested for: Practicing endodontic microsurgery			

DRSK Periapical (mandible)		Article Code	Color	Jaw Slot
 <p>Tooth block featuring periapical lesion</p>		SLV-31-01-CAL	Transparent	31
		SLV-33,4-01-CAL	Transparent	33,4
		SLV-36-01-CAL	Transparent	36
	Suggested for: Practicing endodontic microsurgery			

Gum for DRSK Jaw		Article Code	Compatible Jaw	Color
 <p>Replaceable silicone gums</p>		MAX-G-ST1	DRSK Maxilla	Light red
		MAN-G-ST1	DRSK Mandible	Light red

Pin	Article Code	Material	Length
	PIN-ST1	Plastic	16 mm
	PIN-OP1	Stainless Steel	20 mm

image
unavailable

Jaw model

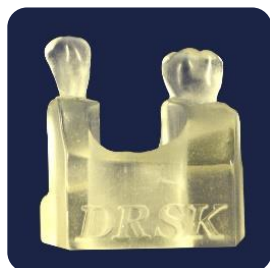
DRSK Jaw Segment 24		Article Code	Compatible Sleeve	Color
		SEG-24-C	SLV-24-XXX	Transparent

**image
unavailable**

Slot for the sleeve: SLV-24
Teeth: 23 and 25
Color: Transparent

Suggested for: Practicing on DRSK RCT and DRSK Restorative tooth models

DRSK Jaw Segment 26		Article Code	Compatible Sleeve	Color
		SEG-26-C	SLV-26-XXX	Transparent



Slot for the sleeve: SLV-26
Teeth: 25 and 27
Color: Transparent

Suggested for: Practicing on DRSK RCT and DRSK Restorative tooth models

DRSK Jaw Segment 33,4		Article Code	Compatible Sleeve	Color
		SEG-33,4-C	SLV-33,4-XXX	Transparent

**image
unavailable**

Slot for the sleeve: SLV-33,4
Teeth: 32 and 35
Color: Transparent

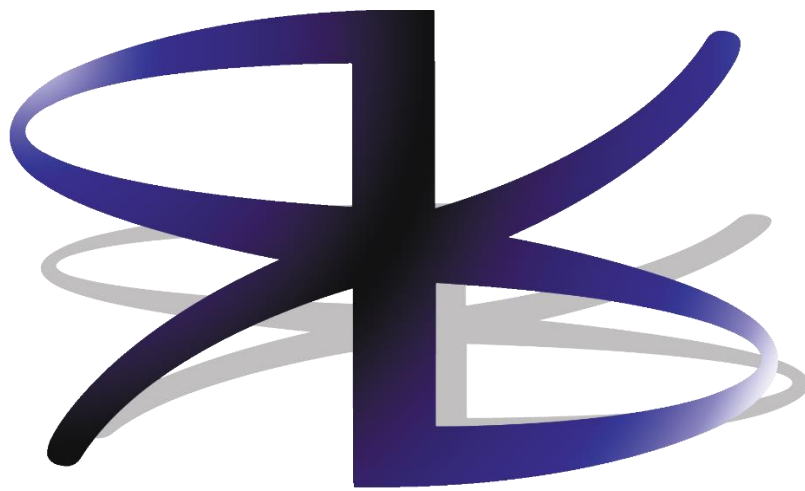
Suggested for: Practicing on DRSK RCT and DRSK Restorative tooth models

DRSK Jaw Segment 36		Article Code	Compatible Sleeve	Color
		SEG-36-C	SLV-36-XXX	Transparent

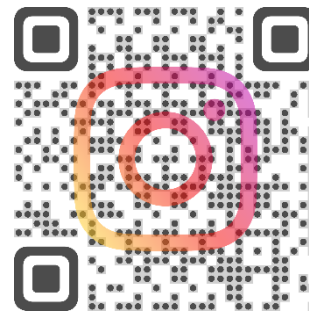
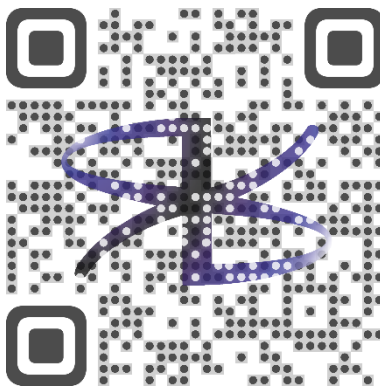
**image
unavailable**

Slot for the sleeve: SLV-36
Teeth: 35 and 37
Color: Transparent

Suggested for: Practicing on DRSK RCT and DRSK Restorative tooth models



Dental and Digital Innovative Solutions



DRSK Group AB
Enhörningsv. 6C,
281 43 Hässleholm,
Sweden
<https://www.drsk.com>

Terms of use:

*Any content contained in this info package including the text and images may not be copied or reproduced in whole or in part in any manner or on any media to any person without the prior written consent of DRSK Group AB.
Copyright © 2019-2023 by DRSK Group AB, all rights reserved. The DRSK logo is a trademark of DRSK Group AB.*